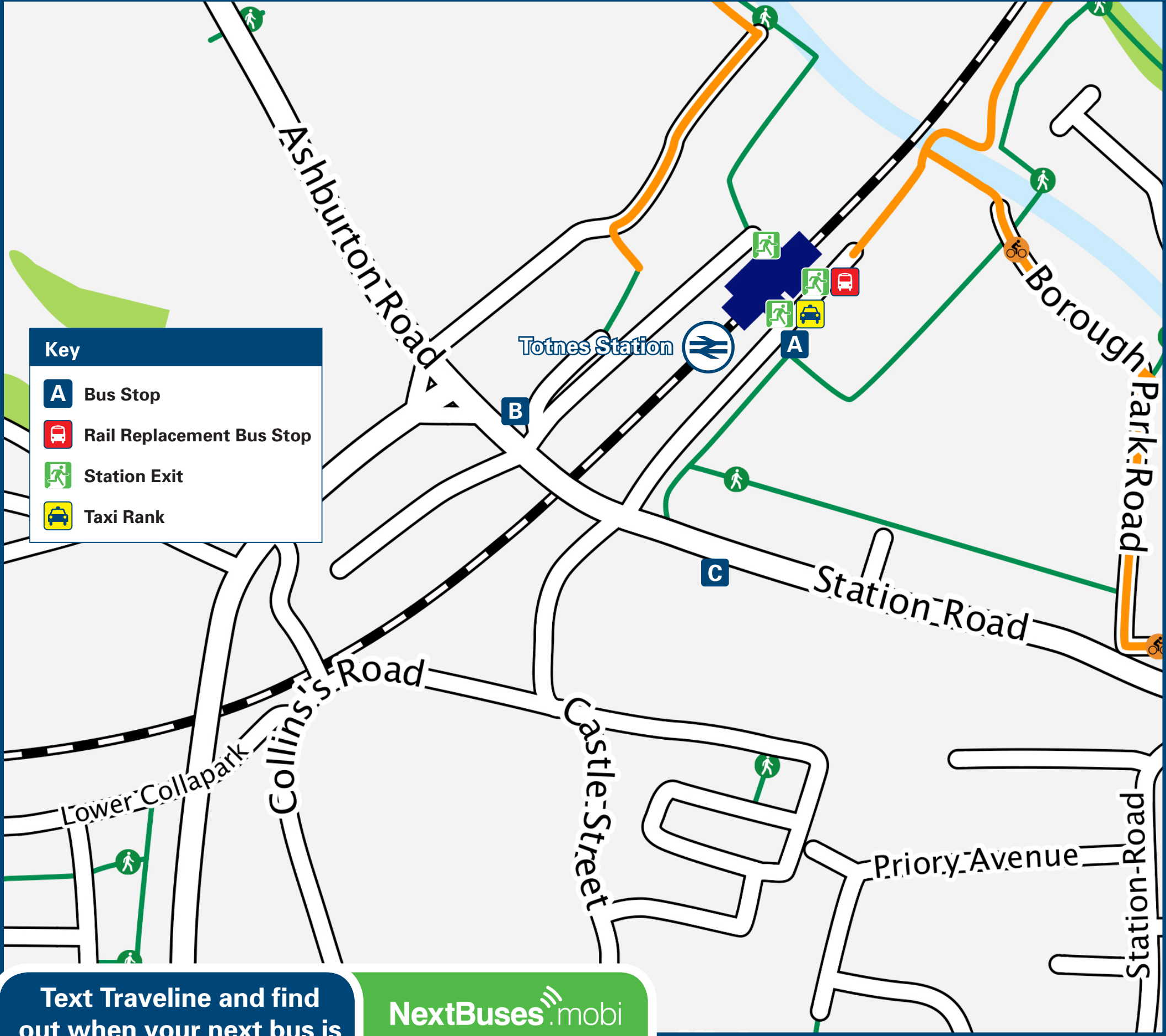




Totnes Station

Onward Travel Information

Buses and Taxis



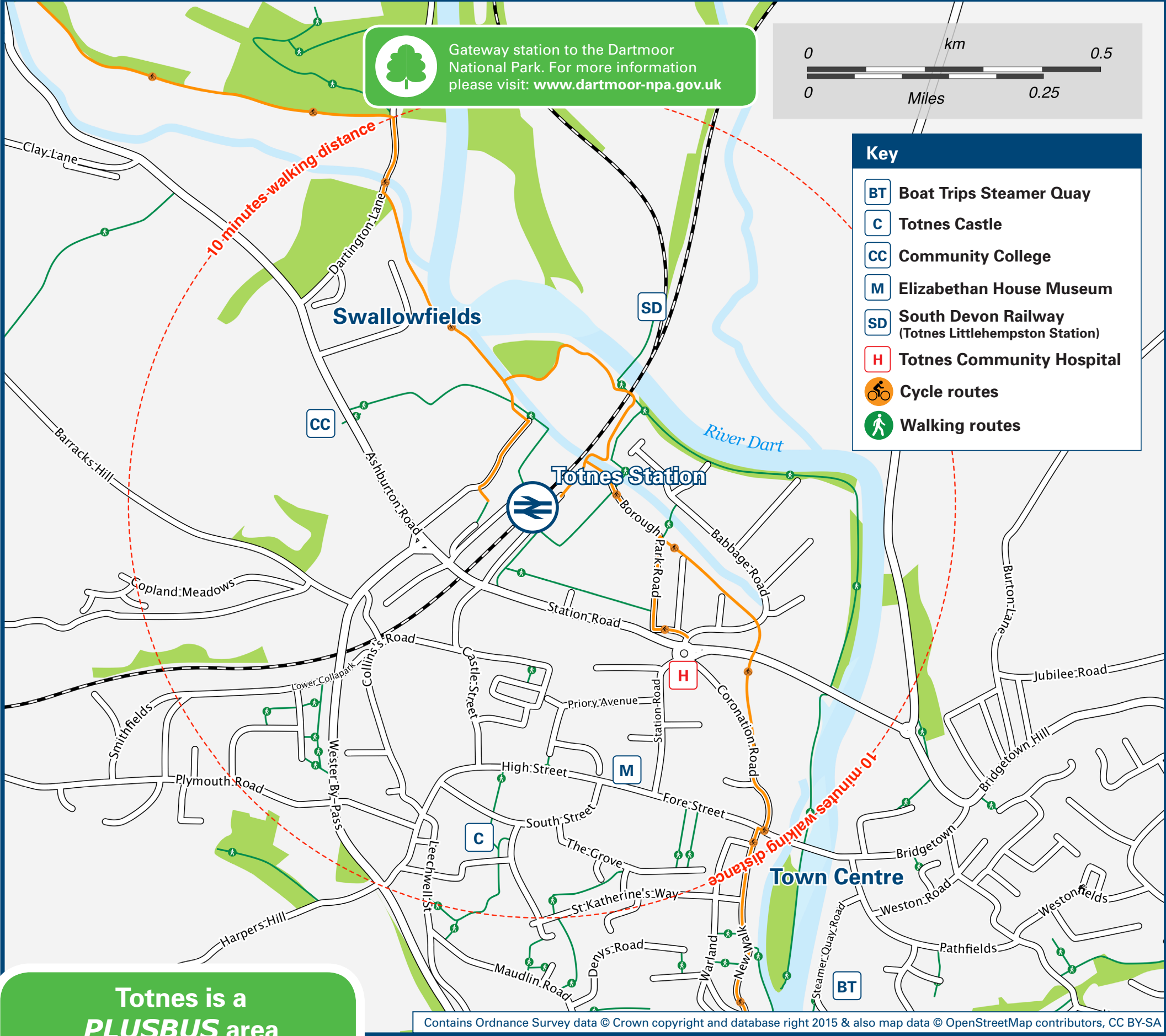
Text Traveline and find out when your next bus is

NextBuses

Text the relevant code for your bus stop to 84268 and receive a text back with the time of the next bus. Traveline texts cost up to 25p for each successful response (plus usual text costs).

A dvndajtd **B** dvndajmt
C dvndajpa

Local area map



Totnes is a **PLUSBUS** area

PLUSBUS is a discount price 'bus pass' that you buy with your train ticket. It gives you unlimited bus travel around your chosen town, on participating buses. Visit www.plusbus.info

Main destinations by bus (Data correct at August 2015)

DESTINATION	BUS ROUTES	BUS STOP
Ashburton	88	C
Bickington Cross	88	C
Bittaford	GOLD	C
• Bridgetown	B1B	A
	GOLD	B
Brixham	Change buses at Paignton Bus Station for bus route 12	
Broadhempston	165	C
Buckfastleigh ☹	88	C
Buckfast (for Buckfastleigh Abbey)	88	C
Collaton St Mary	GOLD	B
• Cott (A385/Shinner's Bridge)	88, 165, GOLD	C
• Cott (Village Centre)	165	C
Dartington	88, 165	C
Dartmouth ☹	X64	A
East Allington	164	A
Falcon Park	GOLD	B
Follaton	B2F	A
	167	C
Halwell	164, X64	A

DESTINATION	BUS ROUTES	BUS STOP
Harberton	164	A
Harbertonford	164, X64	A
Highweek	88	C
Ivybridge ☺	GOLD	C
Kingsbridge	164	A
Mile End	88	C
Morleigh	164	A
Newton Abbot ☺	88	C
	X64	B
Paignton	GOLD	B
Paignton Zoo	GOLD	B
Salcombe	Change buses at Kingsbridge for bus route 606 (Mondays to Saturdays)	
	164	A
Sorley	164	A
South Brent	GOLD	C
South Devon Railway (Totnes Littlehempston Station) ☹	10 minutes walk via footpath from this station please follow the signs	
Staverton ☹	165	C
• Swallowfields	88, GOLD	C

DESTINATION	BUS ROUTES	BUS STOP
Torquay	GOLD	B
	10 - 15 minutes walk from this station (see Local area map)	
	• Totnes (Town Centre)	
	B1B, B2F, 164	A
	88, 165, GOLD	B

Woodlands	X64	A
Woodleigh	164	A
Woolston Green	165	C

Notes

- **PLUSBUS** destination, please see below for details.
- PLUSBUS** tickets are valid within the Totnes **PLUSBUS** zone on Stagecoach buses only.
- PLUSBUS** tickets are NOT valid on bus routes B1B, B2F, 164 or 165 on this poster.
- Bus routes GOLD, 164 and X64 operate daily
- Bus routes B1B, B2F operate a limited service Mondays to Fridays only.
- Bus route 88 and 165 operate Mondays to Saturdays. No Sunday services from Totnes.
- Bus route 167 operates a limited service Mondays to Saturdays. No Sunday service.
- For bus times please see bus stop timetables or contact Traveline.
- ☺ Direct trains operate to this destination from this station.
- ☹ Alight here for the South Devon Railway (for enquiries please phone: 01364 644370).
- ☹ Change at Dartmouth for the ferry to Kingswear.

Taxis

Totnes station is served by a taxi rank or a cab office. Check availability before travelling, and pre-book if necessary. Please consider using the following local operators:

AP
01803 840 404

Nessies
01803 862 444

Annas
01803 782 272

Further information about all onward travel

www.south-hams-dc.gov.uk

For more information about cycle routes.

www.sustrans.org.uk

Sustrans is the UK's leading sustainable transport charity.

www.traveline.info

See timetable displays at bus stops.

traveline
public transport info

www.traveline.info
0871 200 22 33
calls cost 12p per minute plus your phone company's access charge

www.taintaxi.co.uk

A guide to taxis serving all train, tram, metro and underground stations in the UK.

www.plusbus.info

A discount price 'bus pass' that you buy with your train ticket. It gives you unlimited bus travel around your chosen town, on participating buses.

National Rail Enquiries

www.nationalrail.co.uk

nationalrail.co.uk

www.nreapp.com

Free National Rail Enquiries app for iOS and Android

[facebook.com/nationalrailenq](https://www.facebook.com/nationalrailenq)

@nationalrailenq

www.contactcentre.co.uk

03457 48 49 50

Calls cost no more than calls to geographic numbers (01 or 02) and may be recorded

www.traintracker.co.uk

8 49 50

Text station name to the above number for live departure and arrival times direct to your mobile. TrainTracker™ texts cost 25p for each successful response (plus usual text costs).



National Rail
Britain's train companies working together

